



***' Celebrating quality care in the Golden Years '***

**Gold Standard care for people in their golden years, nearing the end of their lives - showcasing inspiring examples of excellence in integrated care**

At this London conference, run by The National GSF Centre, we will hear from keynote speakers, and celebrate excellence, showcasing the achievements of frontline GSF accredited teams in both health and social care.

These frontrunning teams demonstrate what is possible to achieve on the ground, inspiring and encouraging others to aim for 'gold standard' care for people in their 'golden years.'

Join us for inspiring examples of award winning grassroots success, high level keynote speakers, practical advice on implementing quality end of life care, learning opportunities at tailor made workshops to suit all settings - and networking with others committed to this area.

***" Its absolutely amazing! Not the usual kind of conference - more a community of best practice"***

Comment from delegate at 2017 GSF Conference

**Friday 28<sup>th</sup> September 2018**

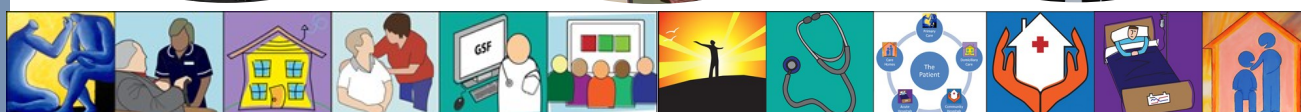
**Ambassadors Hotel Bloomsbury, 12 Upper Woburn Place,  
LONDON WC1H 0HX (near Euston Station)**

**Delegate Rate £195 + VAT.  
Free place to those receiving awards, discounts for GSF RTC and those in training.**

**Keynote Speakers: Dr Martin Vernon, NHS England National Clinical Director  
Prof Martin Green OBE, CEO Care England**

**Plus contributions from: Heather Richardson CEO, St Christopher's Hospice,  
Jo Hockley, Nurse Consultant, Dr Premila Fade from British Geriatrics Society,  
Paul Jennings CEO Birmingham, RCGP, GMC, The GSF Centre team and many others**

**Workshops include: Showcasing excellence in practice in hospitals, primary care, care homes, integrated care, avoiding hospital admissions, update on frailty, advance care planning, compassion and self-care and others - see Registration Form for details.**



GSF Quality Improvement Programmes in End of Life Care enabling a gold standard of care for all people in all settings

For further information please contact The GSF Central Team on 01743 291897 or [info@gsfcentre.co.uk](mailto:info@gsfcentre.co.uk)

See registration form on [www.goldstandardsframework.org.uk](http://www.goldstandardsframework.org.uk) - Latest News/News & Events

# National GSF Conference 2018 Programme

9.15	Registration - Tea & Coffee	 #GSFConf18
10:00	Welcome and introduction Chair Morning Session	<b>Prof Keri Thomas OBE</b> <i>GSF team</i> <b>Paul Jennings</b> <i>GSF Board, CEO Birmingham CCG</i>
10.10	<b>Key note speakers:</b> End of life care and Frailty - current and future challenges	<b>Dr Martin Vernon</b> - <i>NHS England National Clinical Director Care for the Elderly, Consultant Geriatrician</i>
10.30	Home from home - a vision for the future in care homes	<b>Jo Hockley</b> - <i>Senior Nurse Researcher, Edinburgh University, Nurse Consultant in Care Homes</i>
10.50	Update in End of Life Care from CQC - a catalyst for change	<b>Michele Golden</b> , <i>CQC Head of General Practice, London</i>
11.10	<b>Questions and Panel Discussion</b>	
11.20	<b>Tea &amp; Coffee Break</b>	
11.45	<b>GSF Overview and update, 'GSF in a Year'</b> Launch of new GSF programmes and news of updates <b>Interviews with those doing GSF in a variety of settings and Integrated cross-boundary care - areas</b>	<b>Prof Keri Thomas OBE, Julie Armstrong Wilson, + Team</b>  <i>Interviews with leaders from different teams and providers using GSF and GSF Cross Boundary Care Sites</i>
	<b>Celebration - of GSF Accredited teams in GP Practices and hospitals</b>  <i>GSF Quality Hallmark Awards - Primary Care teams</i> <i>GSF Quality Hallmark Awards - Hospitals- both</i> <i>Acute and Community</i>	<b>Presentation of Awards and interviews with accredited teams. Awards presented by</b>  <b>RCGP GP Lead - Dr Victoria Tzortziou Brown</b>  <b>BGS EOLC Lead - Dr Premila Fade</b>
		
1.00	<b>Lunch</b>	
1:45	Chair afternoon <b>Key note speaker:</b> What's next in Social Care	<b>Heather Richardson, CEO, St Christopher's Hospice</b> <b>Prof Martin Green, CEO, Care England</b>
2.00	<b>Celebration - GSF Accredited Care Homes</b>  <i>GSF Quality Hallmark Awards - Care Homes</i> Accredited and reaccredited care homes and Care Home of The Year Award	<b>Presentation of Awards and interviews with accredited teams.</b>  <b>Awards presented by:</b> <b>Prof Martin Green, CEO, Care England</b>
		
2.40	<b>Workshops - Choose 1 of 4: See registration form - 1A GSF Hospitals showcasing, 2A GSF Care Homes showcasing and Ambassadors, 3A Frailty in practice, 4A Advance Care Planning</b>	
3.25	<b>Tea &amp; Coffee Break</b>	
3.35	<b>Workshops - Choose 1 of 4: See registration form - 1B Integrated Cross Boundary Care &amp; GP Showcasing, 2B Dying - the visible and invisible process, 3B Reducing avoidable admissions, 4B Compassionate Self Care</b>	
4.20	Closing Words – final thoughts and congratulations to award winners	<b>Heather Richardson, and GSF team</b>
4.30	<b>Close - Drinks reception and photographs for accredited teams between 4.30 - 5.00pm</b>	