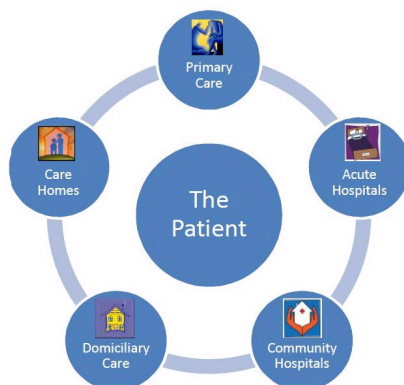


GSF Acute Hospitals

The GSF Acute Hospitals Training Programme in End of Life Care is a comprehensive training programme to support best implementation of GSF in hospitals for patients in the final year/months of life. We use a simple train-the-trainers cascade programme, including training DVD's resources and regular support, to enable frontline staff in your hospital to improve care for people nearing the end of life. This programme builds on the successful work of the last 12 years and has an impact beyond the hospital walls, through developing integrated cross boundary care.

GSF helps to improve :-

- The Quality of Care received
- Coordination and communication across boundaries
- Patient outcomes and cost effectiveness by reducing hospitalisation, enabling more to live and die by reducing hospitalisation, enabling more to live and die where they choose.



Evaluation shows that use of GSF in Acute Hospitals can improve the awareness, confidence and competence of staff, communication and coordination, across boundaries of care, the use of other tools such as care of the dying pathways (LCP) and advance care planning and improve the levels of care experienced by patients and their families. It can help you meet your local targets and CQUINS, build the confidence of your staff to embed and sustain the work long term (Phase 1 GSFAH report now available - [please click here](#)).

What do you need to do to get involved?

- Senior Manager approval
- Board approval agreed
- Access to training venue and time
- Evaluation feedback
- Agreement to share findings, reflections and attend meetings
- Payment according to local requirement

[Acute Hospitals Flyer](#)

Next steps

- Confirm interest by completing the Expressions of Interest Form
- Complete the Registration Form
- Confirm senior support
- Confirm which ward
- Discuss with GSF team
- Costs

Please contact the GSF Centre for more details on 01743 291891



[Please download Adobe Flash Player to see this content.](#)

The introduction to the Acute Hospitals Training Programme.

[Open this video in Windows Media Player](#)

*Dr Karen Groves,
Southport & Ormskirk Hospitals*

[Open this video in Windows Media Player](#)

*Michael Connolly
Wythenshawe Hospital - Identifying Patients*

[Sign In](#)